



26 Greenfield Park Drive Stockton Lane
York, YO31 1JB
£1,100 PCM

 2  1  1  C

****Two Bedroom Ground Floor Apartment****

This lovely two bed ground floor apartment located on a quiet residential street, just off Stockton Lane has become available to rent.

As you enter into the hallway, to your right you will find a spacious living space and diner. Further along the hall there is a modern kitchen, complete with all white goods, this over looks the rear garden. As you progress through the property further you will find a modern three piece bathroom suite and two double bedrooms.

The property would be perfect for two professional sharers, a young couple or small family.

Council Tax Band C

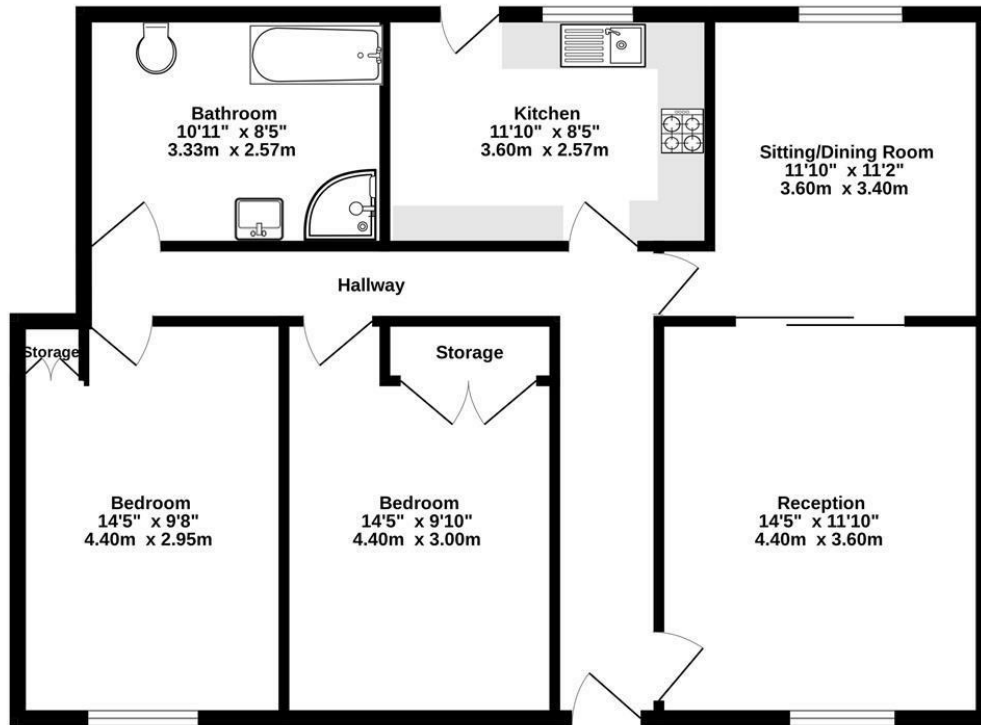
EPC Rating to be confirmed.





FLOOR PLAN

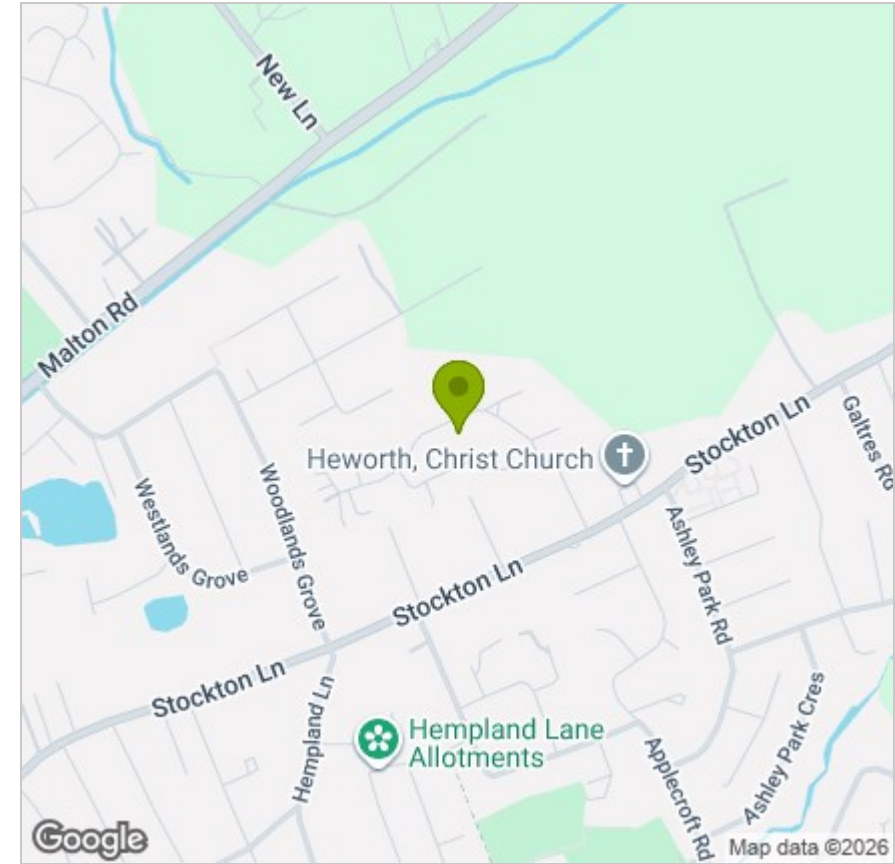
Ground Floor
872 sq.ft. (81.0 sq.m.) approx.



TOTAL FLOOR AREA: 872 sq.ft. (81.0 sq.m.) approx.

Whilst every attempt has been made to ensure the accuracy of the floorplan contained here, measurements of doors, windows, rooms and any other items are approximate and no responsibility is taken for any error, omission or mis-statement. This plan is for illustrative purposes only and should be used as such by any prospective purchaser. The services, systems and appliances shown have not been tested and no guarantee as to their operability or efficiency can be given.
Made with Metrepx ©2026

LOCATION



EPC

Energy Efficiency Rating		Current	Potential
Very energy efficient - lower running costs			
(92 plus)	A		
(81-91)	B		
(69-80)	C	72	76
(55-68)	D		
(39-54)	E		
(21-38)	F		
(1-20)	G		
Not energy efficient - higher running costs			
England & Wales		EU Directive 2002/91/EC	

These particulars, whilst believed to be accurate are set out as a general outline only for guidance and do not constitute any part of an offer or contract. Intending purchasers should not rely on them as statements of representation of fact, but must satisfy themselves by inspection or otherwise as to their accuracy. No person in this firm's employment has the authority to make or give any representation or warranty in respect of the property.

Anglia House, 3a Bishopthorpe Road, York, YO23 1NA

Tel: 01904 646611 Email: info@churchillsyork.com www.churchillsestateagents.co.uk